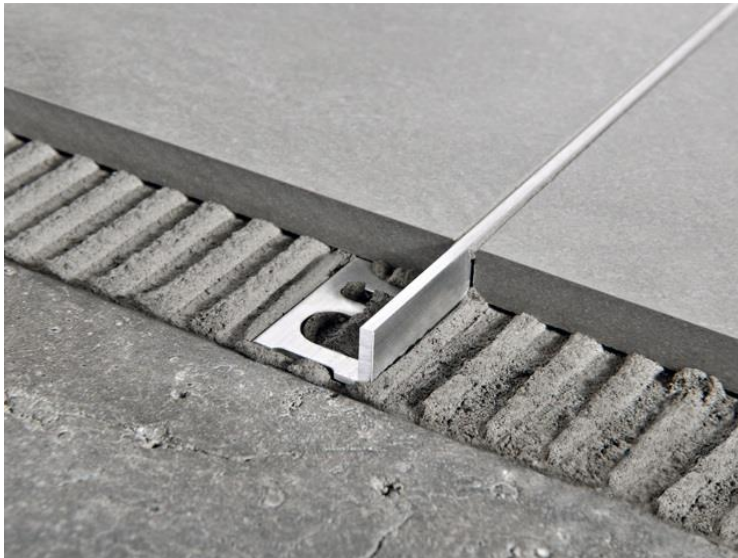


LIXIO JOINT

Natural aluminium, suitable for sanding

Description



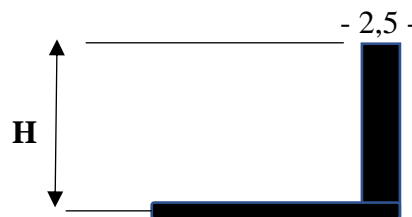
LIXIO JOINT is an L-shaped separation profile made from natural aluminum, available in different heights and suitable for use with decorative floors.

Characteristics:

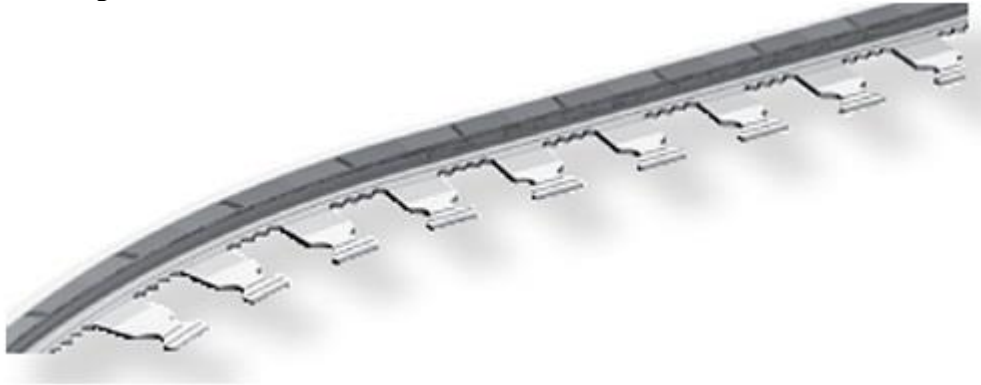
LIXIO JOINT is an "L" -shaped separation profile made from natural aluminum that can be used with decorative floors. Available in heights of 6 - 8 - 10 - 20 - 27 mm, with a visible surface of 2.5 mm. The profile is equipped with a perforated fin that guarantees perfect anchoring with the adhesive used and two perfectly smooth vertical sections.

The profile can be smoothed on site. Its elegance and ease of installation, combined with the availability in various heights, make it a very elegant and aesthetically pleasing profile.

LIXIO-JOINT06 H = 6mm
 LIXIO-JOINT08 H = 8mm
 LIXIO-JOINT10 H = 10mm
 LIXIO-JOINT20 H = 20mm
 LIXIO-JOINT27 H = 27mm



In the three sizes, listed below, there is also a deformable joint version, to accompany any shape or design to be created in the floor.



LIXIO-JOINT08 CV H = 8mm
 LIXIO-JOINT20 CV H = 20mm
 LIXIO-JOINT27 CV H = 27mm

Attention

Do not use natural aluminium based LIXIO-JOINT in swimming pools and environments where aggressive substances are present. Immediately after laying, clean any residual glue or putty from the exposed joint surface.

IMPORTANT:

All the information contained in this sheet is based on the best practical experience. It is the customer's responsibility to verify that the product is suitable for the intended use. The manufacturer declines all responsibility for the results of incorrect application. It is always advisable to carry out tests on small areas before full application. The data can be changed at any time. We also remind you that Ideal Work products are intended for professional use only and that Ideal Work provides periodic training for its customers on request. Anyone who uses these products without being enabled does so at their own risk.
 ED. 01 - 17.03.2021